



**EARLY
LEARNING
COALITION**
OF ORANGE COUNTY

2020-2021

INVESTING IN THE FUTURE OF
EARLY LEARNING FOR ORANGE COUNTY



A LETTER FROM THE CEO

Dear friend,

When the pandemic hit in March 2020, none of us dreamed it would consume the entire following fiscal year. But consume all our efforts from July 2020 through June 2021 it did. Yet it also brought a renewed sense of resolve as we began steps to build back stronger.

The investments in technology we made at the start of COVID paid off as parents continued to participate in skill building programs. Teachers and directors embraced coaching and mentoring to raise the level of early learning quality. The pivot to virtual readers kept community volunteers in classrooms. Strong pandemic responsive protocols kept our Book Buddies still putting books in the hands of children. And Business Institute doubled its efforts to support early learning entrepreneurs to keep their businesses open to serve families.

The Artist in Residence program continued to bring joyful experiences showcasing the talents of the Orlando Philharmonic and the Orlando Ballet. The LENA Grow project that uses mini recorders to promote language development maintained its high level of interaction between infants and teachers. The generous support of foundation and business funders brought more mental health and social emotional supports for children and caregivers. And our virtual First Five Years Celebration surpassed its goal by raising over \$107,000.

It is often said that it takes a village and the village responded this past year. We cannot be more grateful to our Board of Directors, our donors, our funders, our sponsors, and our community at large. ELCOC's always critical mission to provide Orange County children with quality early education remains urgent. On behalf of our youngest children and their families, thank you for being there for them and for us all.

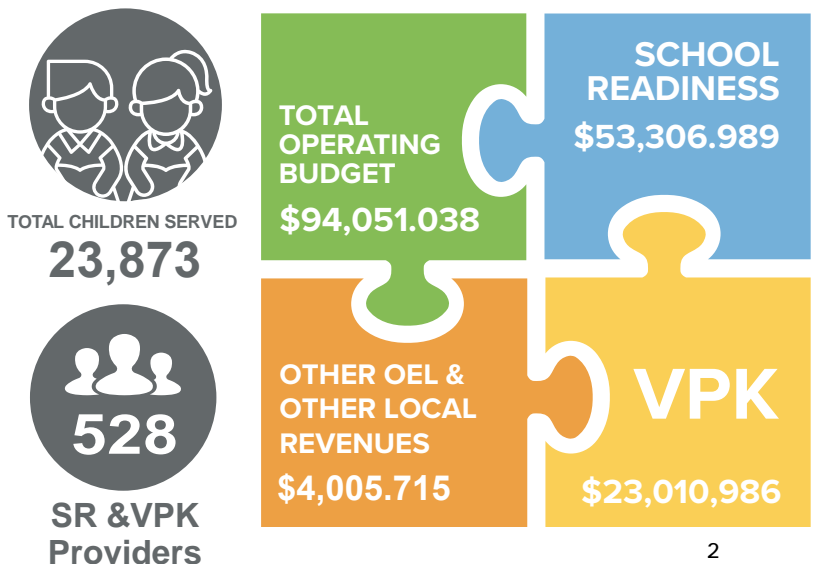
We will get them through this, together.

Karen Willis

MISSION STATEMENT

Our mission is to provide every child with equal access to high quality early learning programs by supporting those who help children grow and develop.

2020-2021 EXPENDITURES BY FUND



ELCOC'S RAPID RESPONSE TO COVID-19

Up-To-Date Provider Resources

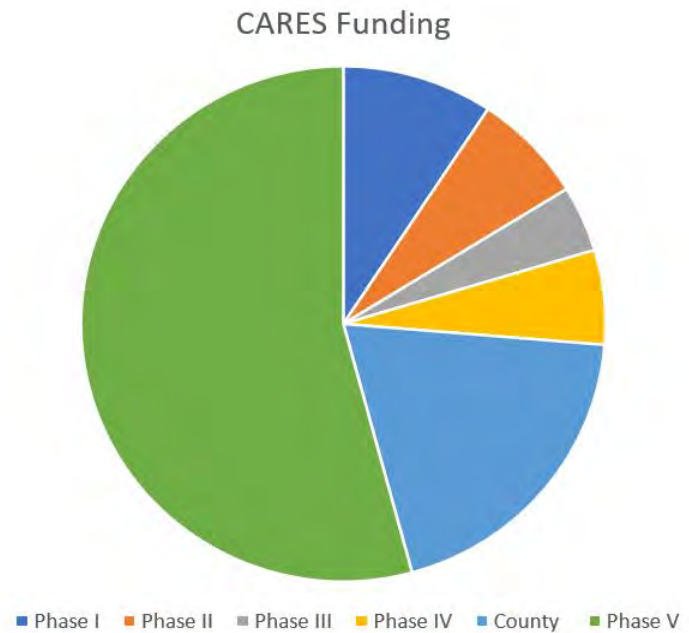
ELCOC's Provider Services staff continued weekly virtual meetings, where providers can voice concerns and ELCOC can provide updates on the latest state and federal guidelines. We also continued the COVID-19 resource page on our website for these ongoing updates.

Continuing Education for Providers

A strong network of quality childcare is essential for businesses to reopen and for parents to return to work. ELCOC's Business Institute for Early Learning Entrepreneurs, with the support of Wells Fargo, launched the virtual Early Childhood Education business conferences and webinar series.



COVID Recovery Grant Funding for 2020-2021



Type of Funding	Amount
Phase I FL	\$992,875.00
Phase II FL	\$737,940.00
Phase III FL	\$442,103.00
Phase IV FL	\$631,500.00
County	\$2,077,110.00
Phase V FL	\$5,782,500.00
Total	\$10,664,028

SUPPORTING MENTAL AND BEHAVIORAL HEALTH AWARENESS IN EARLY EDUCATORS



The ELCOC has been able to expand early childhood mental health supports to our early childhood teachers this year with the use of Preschool Development grant funds. A pilot **Early Childhood Mental Health Consultation (ECMHC)** program was initiated to provide weekly visits by licensed early childhood mental health consultants to ten early childhood programs in Orange County. Building on the work that the **Florida Blue Foundation** established with the **Employee Assistance Program (EAP)**, early childhood mental health consultants from Kinder Consulting provide teachers with positive mental health supports and assistance as teachers work with children in their classrooms. To date, 87 teachers in 60 classrooms have participated in this program and their feedback has been overwhelmingly positive.

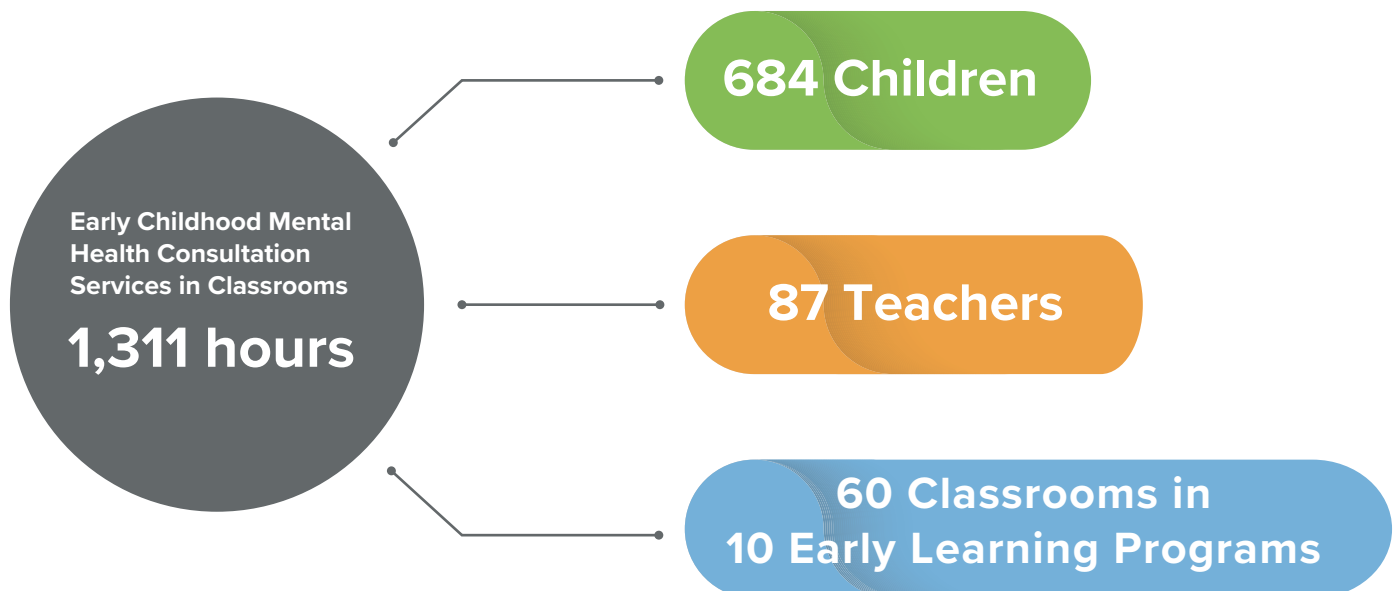
“What was helpful to me was [the Mental Health Consultant] would come by, me being family home care provider, having kids of different ages, and my special needs child was a preschooler. She helped me and showed me how to manage when things would happen and he would act out; she would show me how to bring it back in without losing control.



Early Childhood Mental Health Consultant Erika R. at work.

She taught me so well that now I use it so much and it just comes natural. Before, I had a lot of pressure and tension because you don't want to give up on the child and then you're thinking, is this really the place for the child? [This child] was kicked out of two schools; when this program came along, it was heaven- my consultant came right in and the way she was with the children, it helped me to know how to handle the children. She showed me so much and it was so helpful for me and for him until I scored way beyond the [CLASS] score that was passing. I couldn't ask for anyone better. She was awesome!" - Kissha Ballard, Kissha's Little Ones

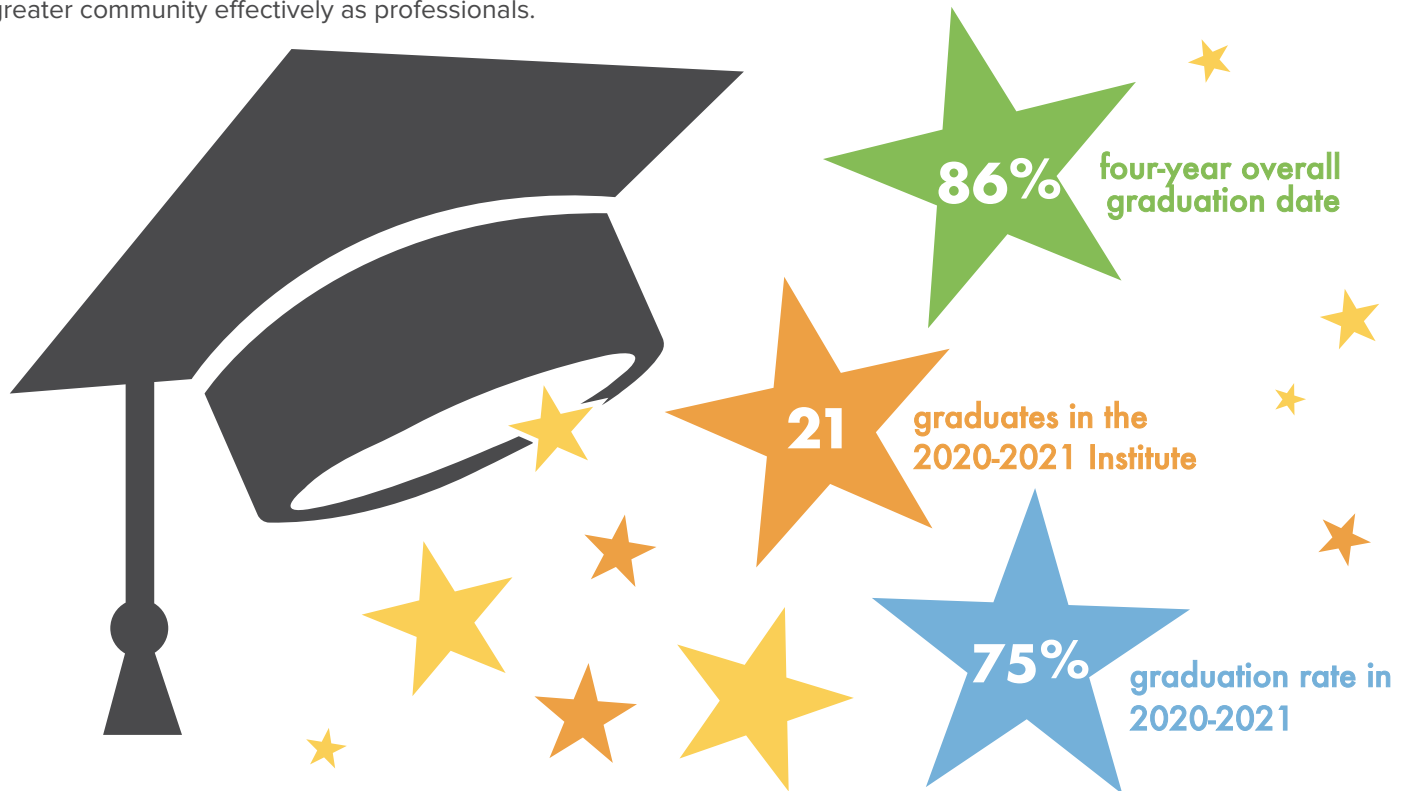
Early Childhood Mental Health Consultation



PROGRAM SPOTLIGHT: 2020-2021 BUSINESS INSTITUTE FOR EARLY LEARNING ENTREPRENEURS

Celebrating Four Years of Continuing Education

The Business Institute for Early Learning Entrepreneurs helps to build the stability of early learning programs across Central Florida, including providers from The Early Learning Coalitions of Brevard and Osceola. The five targeted sessions empower providers to work toward a sustainable business that can engage in the greater community effectively as professionals.



Alumni Success Story

Chevelle Teague participated in the second year of the Business Institute, recruited by City Council Commissioner Regina Hill. Chevelle took seriously the information that was shared throughout the program and when the COVID-19 pandemic hit, was able to not lose any of her team members and stay open. Her success has continued as she has now been approved to purchase a building and is looking to move her business plan forward by owning her business and property.

“I didn’t lose any employees. I actually gave raises, [essential worker] bonuses... I kept them in mind because they worked so hard. And they were there for me. Nobody walked out. I didn’t even have a call-in. It was just great.”

Chevelle Teague

-Play, Laugh & Grow Academy, Year Two Business Institute Alumni



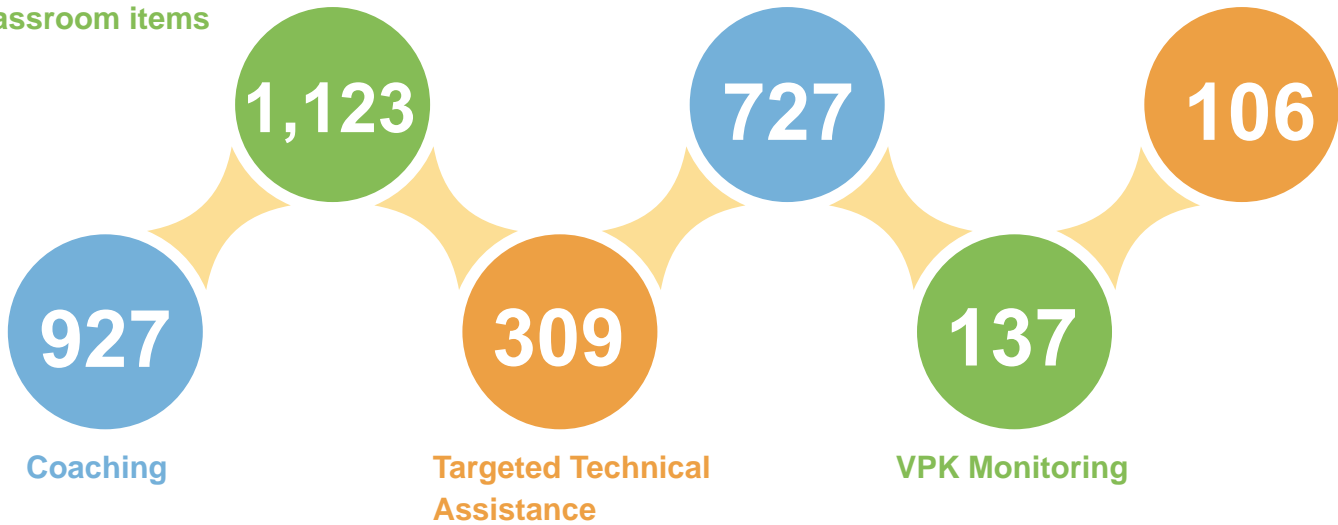
3,270 TOTAL VISITS TO PROVIDERS IN 2020-2021

This includes but is not limited to...

Material dropped off to providers, such as laptops (Surface Go), supplies and classroom items

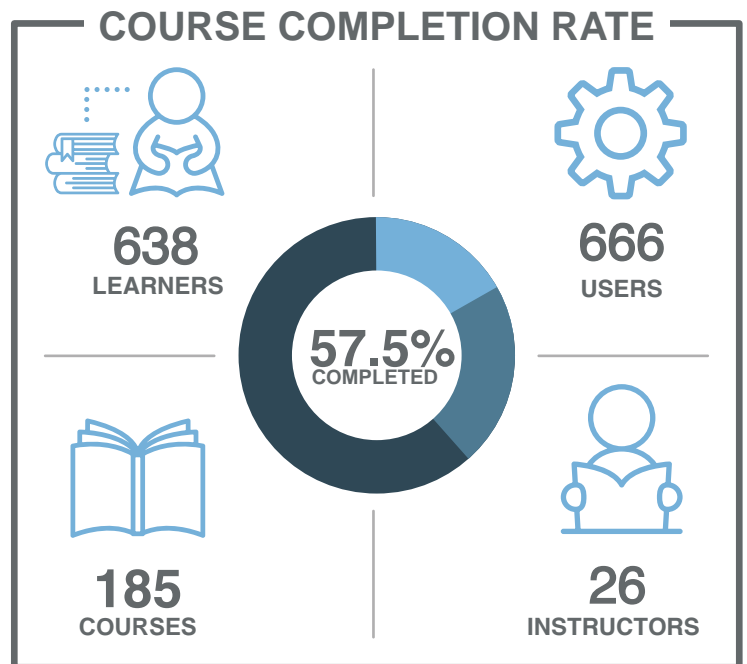
School Readiness Class Observation

School Readiness Monitoring



PROGRAM SPOTLIGHT: INSTITUTE FOR EARLY LEARNING

The Institute for Early Learning (I4EL) offers early childhood professionals the opportunities to enhance their evidence-based practice and business acumen in early care and education. At this time, I4EL has 638 active learners across 185 different course offerings.



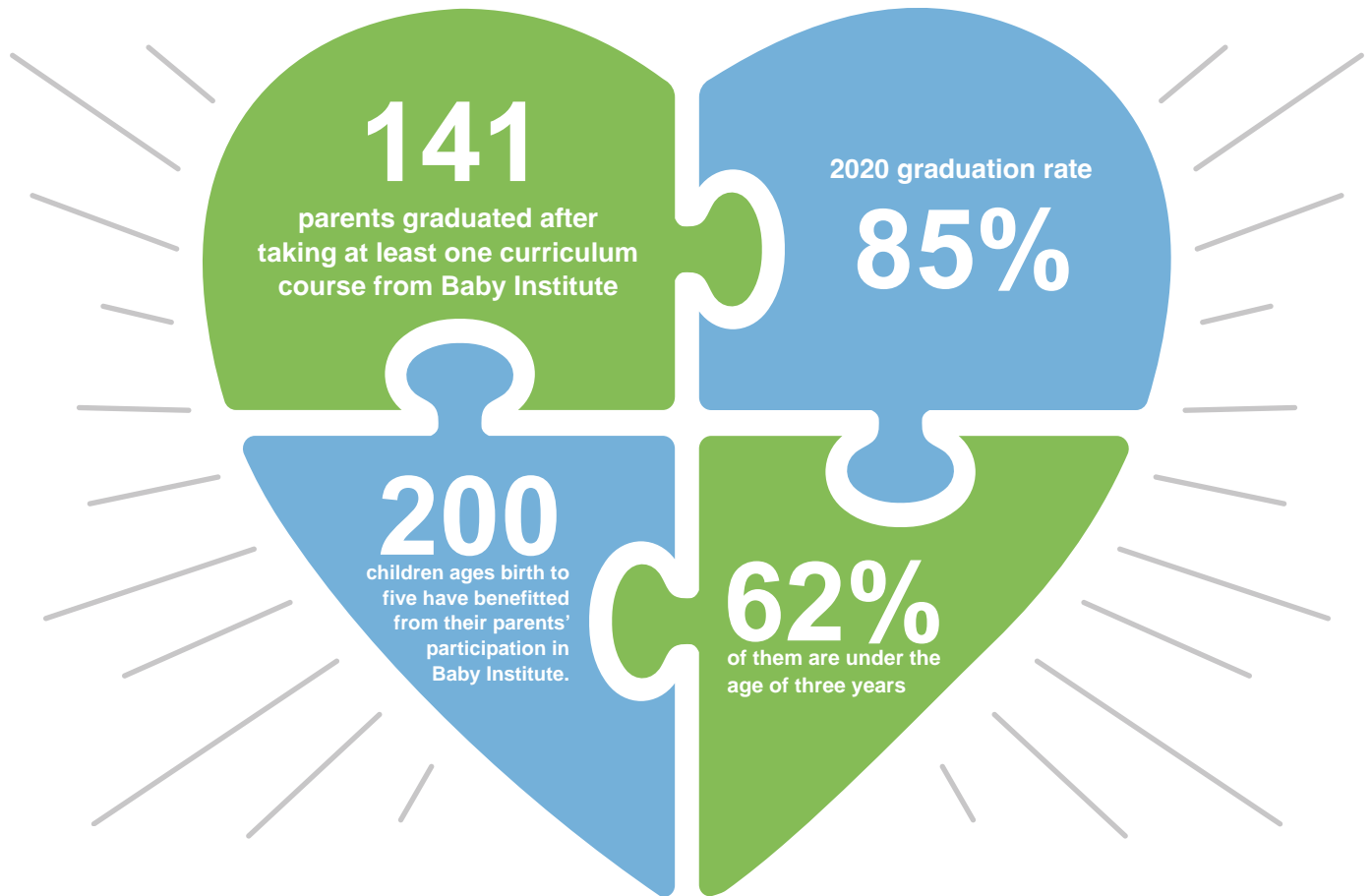
Participation measures across courses indicate that 86.5% of users have begun at least one course. It is noted that of those 550 users, 72.5% of users have completed at least one or more courses. Overall, course progression rates indicate that over seventy percent have begun, progressed, or completed the courses with which they are enrolled.

I4EL offers several annual course series which include advancing levels of core competencies around the Division of Early Learning's Core Knowledge areas. With all annual courses, I4EL provides guides, texts, and a variety of materials that support the participant's implementation of the content learned.

PROGRAM SPOTLIGHT: BABY INSTITUTE

Building Strong Families in Orange County

ELCOC's six-week Baby Institute program helps at-risk families build the knowledge and skills that lead to better parenting and, in turn, to better school readiness outcomes for children. During the fiscal year of 2020-2021 Baby Institute expanded from Parramore to four additional areas within Orange County.



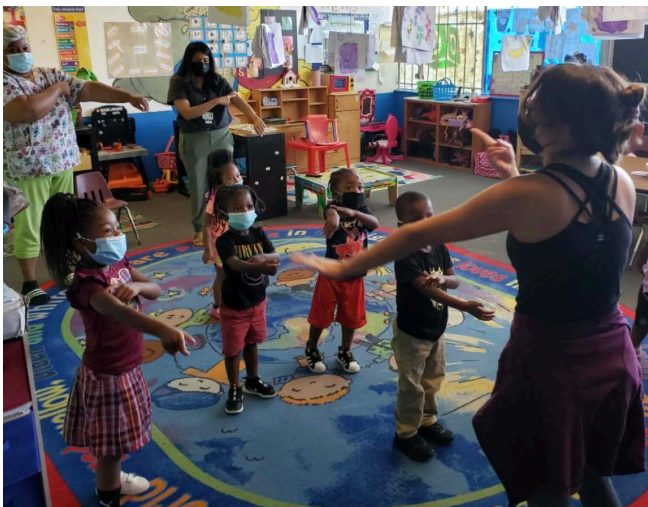
JEANNIE'S STORY



Jeannie, mother of two children, completed the preschool curriculum of Baby Institute in July 2020. Jeannie was encouraging and fully engaged in group and individual sessions. Jeannie had perfect group class attendance for cycles 22 and 28- each time making the commitment to graduate and to motivate others to do the same. Jeannie states that her greatest knowledge gained as a participant was learning about how to bond with her children, accepting her flaws and becoming more patient as a parent. She states, "Patience is a virtue and there are so many ways to teach your kids that's not only educational, but fun too. Jeannie is a shining star because she understands that the knowledge gained in Baby Institute helps the community and parents become better. Jeannie would like other parents to know that the program is truly a blessing which is why she has attended the program multiple times over the years. Jeannie states, "It takes a village to raise our children to be the very best, and being connected to all of these great resources in Baby Institute is one sure way to stay informed, up-to-date and in the know."

CONTINUING ARTIST IN RESIDENCE PROGRAM

The Artist in Residence program is offered with the support of the PNC Foundation



Project HOPE Parramore

Through the support of the Florida Association of Healthy Start Coalitions and the Nemours National Prevention Office, the ELCOC continued **Project HOPE Parramore** with a focus on parents as leaders, advocates, and most importantly, the best first teacher of their children. Forty-five parents from the Parramore Heritage Neighborhood, led by three Parent Advocates, participated in monthly parent activities focused on supporting their children's optimal development. Fifteen parents successfully completed a Building Healthy & Equitable Communities training series offered by the Institute for Public Health Innovation in May 2021.



EARLY LEARNING RESEARCH AND SPECIAL PROJECTS

Artist in Residence

The Artist in Residence program supports early childhood teachers to build creativity in their classrooms through a diverse offering of creativity in the arts. Working collaboratively with the Orlando Philharmonic Symphony, Central Florida Community Arts and the Orlando Ballet, children were able to enjoy arts experiences to spark their creativity. Twenty-one teachers from seven early learning programs participated this year, earning continuing education units for their work., showing an 18% increase in knowledge among the three levels of participants.

Ginsburg Early Scholars

Two teachers working in infant/toddler classrooms are participating in the Ginsburg Family Foundation-sponsored scholarship initiative. One teacher will complete her AA degree in Fall 2021, while the second is an honors student.

Circle of Security

The ELCOC will be able to, with Advent Health support, expand the Circle of Security attachment-based training for early childhood teachers. This will allow the ELCOC to expand the work begun by Dr. Kim Renk, of UCF's Psychology Department, to serve more programs in Orange County, with an increased number of trained facilitators to offer this program in both English and Spanish to community childcare programs.



Orlando Magic Youth Foundation ABC Infant/Toddler Program

The OMYF ABC program seeks to build quality in infant/toddler classrooms through targeted training for both directors and infant/toddler teachers. Utilizing LENA Grow technology, teachers were able to assess their use of language and responsive interactions with children to provide quality care. The 13 teachers participating in the program, caring for 54 infants and toddlers, showed a 56% average increase in knowledge as a result of their participation with a 25% increase in conversational interactions with the little ones in their care.



ENCOURAGING YOUNG READERS FROM A SOCIAL DISTANCE: 2020-2021 VOLUNTEER PROGRAMS



Despite COVID, our wonderful volunteer readers stepped up to create story time magic online for their enthusiastic young listeners.

Children from five early learning centers enjoyed the first virtual Celebrity Readers with the Charles Schwab Reading Extravaganza. Additionally, through our Books and Badges Program, first responders from the Orlando Fire Department, Orlando Police Department, and Orange County Sheriff's Office provided numerous pre-recorded videos for the enjoyment of the children.

Our Ready Reader program also welcomed and sustained 12 new volunteers, who virtually read to the children every week at specific centers. During the year we also held five book drives, getting more than 500 books into the hands of young readers.

DID YOU KNOW?

By age four, children who live in low-income homes will hear

30 MILLION FEWER WORDS

than children who live in more affluent homes

Help us bridge the gap through our literacy initiatives



Special thanks to the amazing supporters* of the Early Learning Coalition of Orange County!

Corporate Donors

*Supporters listed donated at least \$1,000 this fiscal year

4C (Community Coordinated Care for Children)
 AdventHealth Orlando
 CareerSource Central Florida
 Cash & Associates, P.A.
 Central Florida Foundation
 Charles Schwab Foundation
 City of Orlando
 Florida Association of Healthy Start Coalitions
 Florida Blue Foundation
 Florida Lottery

Fringe Benefit Plans, Inc.
 Heart of Florida United Way
 Helios Education Foundation
 IPRG, Inc.
 Lakeshore Learning Materials
 Massey Services
 Nemours Children's Health System
 Orange County Public Schools
 Orange County Sheriff's Office
 Orlando Health
 Orlando Magic
 OUC Orlando Utilities **Commission**

PayPal Giving Fund PNC Foundation
 Publix Super Markets Charities
 Seacoast Bank
 UCF Community Relations
 Valencia College Verizon
 Wireless Walmart Foundation
 Walt Disney World

Individual Donors

Adrianna Sekula
 Andrew Goberdhan
 Angie Sola
 Bridget Burris

Cindy Jurie
 J. Gordon and Susan Arkin
 Karen Castor Dentel

Linda Shaughnessy
 Patricia Frank
 Patricia & Roy Ambinder
 Samuel Bullard

Sarah Taliento
 Tamara Enders
 Tamra Boone



7700 Southland Boulevard,
 Suite 100 Orlando, FL 32809

Phone : 407-841-6607
 Fax : 407-749-0282

elcoc.org



@EarlyLearningCoalitionofOrangeCounty



@ELCOC



company/early-learning-coalition-of-orange-county



Early Learning Coalition of Orange County



@elcoc_